

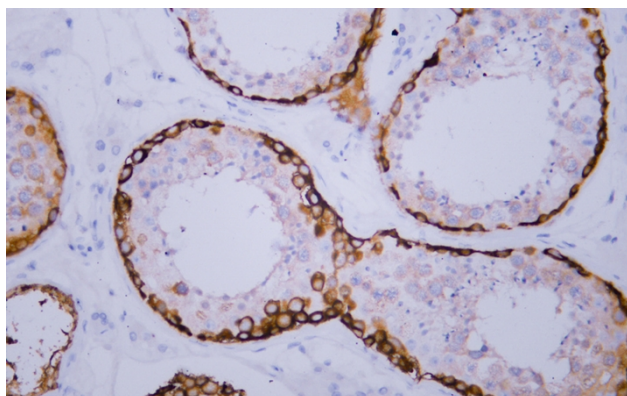


MAGE-C1 mouse mAb(ABT251)

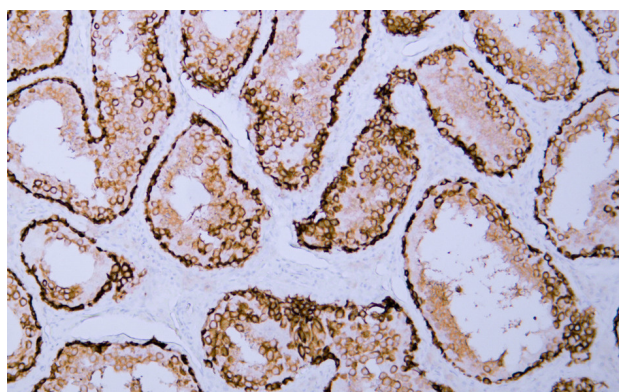
Catalog No	YP-Ab-15599
Isotype	IgG
Reactivity	Human; Predict react with Mouse, Rat
Applications	IHC;WB;IF
Gene Name	MAGEC1
Protein Name	MAGE-C1
Immunogen	Synthesized peptide derived from human MAGE-C1
Specificity	The antibody can specifically recognize human MAGE-C1 protein.
Formulation	Liquid in PBS containing 50% glycerol, 0.5% BSA and 0.04% sodium azide.
Source	Mouse, Monoclonal/IgG2b, Kappa
Purification	The antibody was affinity-purified from mouse ascites by affinity-chromatography using specific immunogen.
Dilution	IHC-p 1:100-500, WB 1:200-1000, IF 1:100-500
Concentration	1 mg/ml
Purity	≥90%
Storage Stability	-20°C/1 year
Synonyms	Melanoma-associated antigen C1 (Cancer/testis antigen 7.1;CT7.1;MAGE-C1 antigen)
Observed Band	
Cell Pathway	Testis
Tissue Specificity	Expressed in testis and in tumors of a wide variety of histologic types.
Function	similarity:Contains 1 MAGE domain.,tissue specificity:Expressed in testis and in tumors of a wide variety of histologic types.,
Background	This gene is a member of the melanoma antigen gene (MAGE) family. The proteins of this family are tumor-specific antigens that can be recognized by autologous cytolytic T lymphocytes. This protein contains a large number of unique short repetitive sequences in front of the MAGE-homologous sequence, and therefore is about 800 aa longer than the other MAGE proteins. [provided by RefSeq, Jul 2008],
matters needing attention	Avoid repeated freezing and thawing!
Usage suggestions	This product can be used in immunological reaction related experiments. For more information, please consult technical personnel.



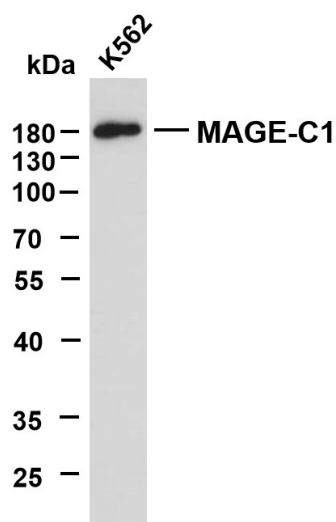
Products Images



Human testis tissue was stained with Anti-MAGE-C1 (ABT251) Antibody



Human testis tissue was stained with Anti-MAGE-C1 (ABT251) Antibody



K562 whole cell lysates were separated by 10% SDS-PAGE, and the membrane was blotted with anti-MAGE-C1(ABT251)antibody. The HRP-conjugated Goat anti-Mouse IgG(H + L) antibody was used to detect the antibody. Lane 1: K562
Predicted band size: 124kDa Observed band size: 180kDa